



SOP #22-002

CORE MANAGEMENT PROCESS

OEM selling dealers are required to follow the core management process outlined below:

1. Core charge upfront fee

Core Charge of AUD 1,500 /USD 1,000 per core will be collected upfront from OEM upon sale of every new carrier. A single invoice, combining new carrier and core will be supplied for each carrier transaction.

2. Evidence of Core Destruction

OEM Dealers must submit proof of core destruction to CDBS Australia within 15 months from the invoice date. Failure to provide acceptable evidence or submitting inadequate documentation may result in liability for the core charge.

3. Core Charge Credit

Upon successful review of the submitted evidence, the core charges AUD 1,500 /USD 1,000 will be credited to the OEM's account in full, with no interest accrual.

DESTRUCTION PROCESS

- Ensure core housing and crown wheel are damaged by appropriate means eg. oxy torch or angle grinder as shown in Fig 1. Please ensure special PPE is worn at all times during the time of core destruction.
- Take photo of destructed unit along with serial number demonstrating damage as shown in Fig 2.
- Email the Core destruction form FM-0021 and photos to coresaus@cummins.com with clearly visible serial number.
- You will then receive an email from Cummins confirming authorisation has been completed.
- You can now proceed to scrap the core.



BEFORE DESTRUCTION



AFTER DESTRUCTION

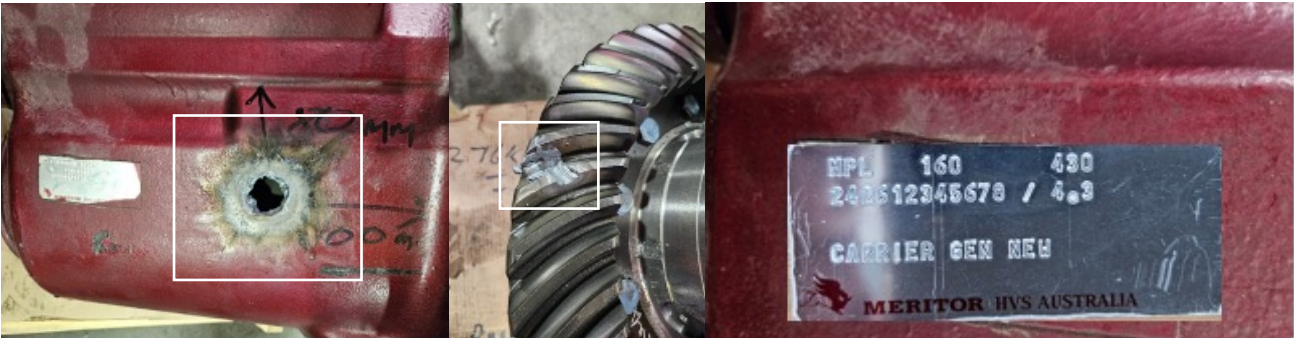


Fig 1. Destruction of Housing/Crown Wheel

Fig 2. Visible serial number

<p>Cummins Drivetrain and Braking Systems 50 Calarco Drive DERRIMUT VIC 3036 Phone: (03) 38353 6050 (Parts Direct) (03) 38353 6000 (Office) ABN 86 004 479 430</p>		<p>OLD SERIAL # _____</p> <p>NEW SERIAL # _____</p> <p>MODEL # _____</p> <p>RATIO # _____</p>
<p>CORE DESTRUCTION AUTHORISATION FORM</p>		
<p>DEALERSHIP: _____</p> <p>ADDRESS: _____</p> <p>CITY: _____ STATE: _____ POSTCODE: _____</p> <p>PHONE NUMBER: _____</p>		<p>DEALER CODE: _____</p>
<p>STEP 1: Form must be filled out completely before submission to CDBS. Failure to submit correctly will result in submission not being accepted for authorisation. Email completed submissions (inc. photos) to coresaus@cummins.com</p> <p>STEP 2: Is dealer in possession of return core? Yes _____ No _____ (If you answered "Yes" to Step 2 follow Step 3.)</p>	<p>STEP 3: (Each returnable item should be accompanied by an RMA #.) Is this a warranty/Rework /Annual Returns? Yes _____ No _____ If yes, do not scrap core. Contact CDBS CVA at cvaau.sales@cummins.com for an RMA number. If you have any further questions, please write to coresaus@cummins.com or talk to your Territory managers for further advice. RMA #: _____</p>	<p>STEP 4: Cores are no longer required to be returned to CDBS. Please send through photos with this submission of the following to complete the authorization: <input type="radio"/> Before photo – including Serial number <input type="radio"/> After photo – including Serial number and damage to housing and crown wheel.</p>
<p>Document: FM021 Issue: J Date: 20 MAY 2025</p>		

Fig 3. Core Destruction Authorisation Form